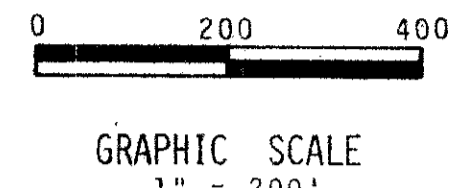
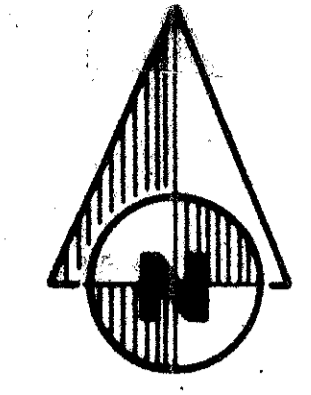


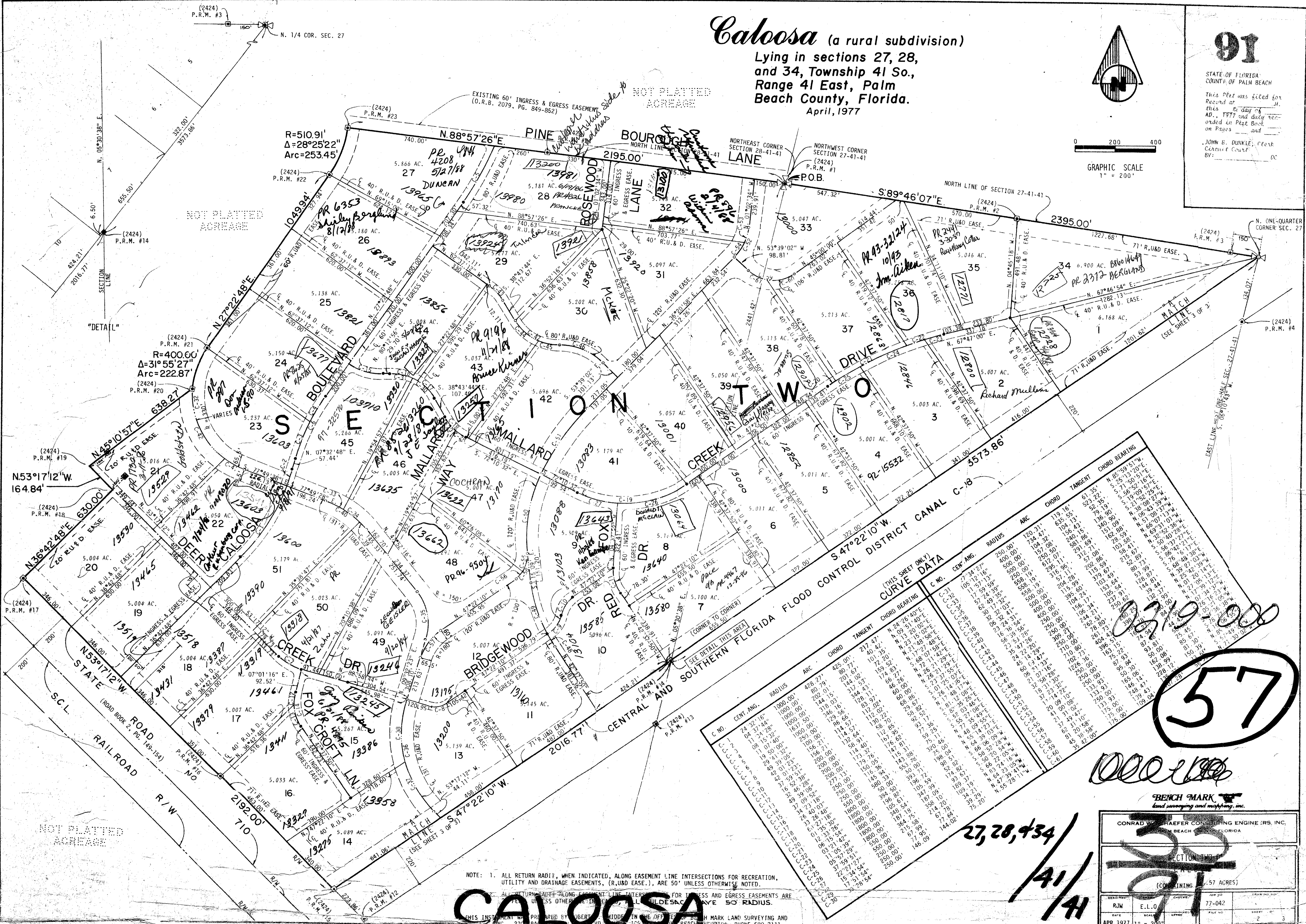
Caloosa (a rural subdivision)

Lying in sections 27, 28,
and 34, Township 41 So.,
Range 41 East, Palm
Beach County, Florida.
April, 1977



91

STATE OF FLORIDA
COUNTY OF PALM BEACH
This Plat was filed for
Record at _____ M.
this _____ day of
AD. 1977 and duly re-
corded in Plat Book _____
on Pages _____ and
_____.
JOHN E. DUNKLE, Clerk
Circuit Court
BY: _____ DC



(THIS SHEET ONLY)

C. NO.	CENT. ANG.	CHORD	TANGENT	CHORD BEARING	RADIUS
1	24° 32' 16"	428.791	217.47	N 24° 26' 40" E	200.00'
2	24° 32' 16"	428.791	217.47	N 24° 26' 40" E	200.00'
3	24° 32' 16"	428.791	217.47	N 24° 26' 40" E	200.00'
4	24° 32' 16"	428.791	217.47	N 24° 26' 40" E	200.00'
5	24° 32' 16"	428.791	217.47	N 24° 26' 40" E	200.00'
6	24° 32' 16"	428.791	217.47	N 24° 26' 40" E	200.00'
7	24° 32' 16"	428.791	217.47	N 24° 26' 40" E	200.00'
8	24° 32' 16"	428.791	217.47	N 24° 26' 40" E	200.00'
9	24° 32' 16"	428.791	217.47	N 24° 26' 40" E	200.00'
10	24° 32' 16"	428.791	217.47	N 24° 26' 40" E	200.00'
11	24° 32' 16"	428.791	217.47	N 24° 26' 40" E	200.00'
12	24° 32' 16"	428.791	217.47	N 24° 26' 40" E	200.00'
13	24° 32' 16"	428.791	217.47	N 24° 26' 40" E	200.00'
14	24° 32' 16"	428.791	217.47	N 24° 26' 40" E	200.00'
15	24° 32' 16"	428.791	217.47	N 24° 26' 40" E	200.00'
16	24° 32' 16"	428.791	217.47	N 24° 26' 40" E	200.00'
17	24° 32' 16"	428.791	217.47	N 24° 26' 40" E	200.00'
18	24° 32' 16"	428.791	217.47	N 24° 26' 40" E	200.00'
19	24° 32' 16"	428.791	217.47	N 24° 26' 40" E	200.00'
20	24° 32' 16"	428.791	217.47	N 24° 26' 40" E	200.00'
21	24° 32' 16"	428.791	217.47	N 24° 26' 40" E	200.00'
22	24° 32' 16"	428.791	217.47	N 24° 26' 40" E	200.00'
23	24° 32' 16"	428.791	217.47	N 24° 26' 40" E	200.00'
24	24° 32' 16"	428.791	217.47	N 24° 26' 40" E	200.00'
25	24° 32' 16"	428.791	217.47	N 24° 26' 40" E	200.00'
26	24° 32' 16"	428.791	217.47	N 24° 26' 40" E	200.00'
27	24° 32' 16"	428.791	217.47	N 24° 26' 40" E	200.00'
28	24° 32' 16"	428.791	217.47	N 24° 26' 40" E	200.00'
29	24° 32' 16"	428.791	217.47	N 24° 26' 40" E	200.00'
30	24° 32' 16"	428.791	217.47	N 24° 26' 40" E	200.00'
31	24° 32' 16"	428.791	217.47	N 24° 26' 40" E	200.00'
32	24° 32' 16"	428.791	217.47	N 24° 26' 40" E	200.00'
33	24° 32' 16"	428.791	217.47	N 24° 26' 40" E	200.00'
34	24° 32' 16"	428.791	217.47	N 24° 26' 40" E	200.00'
35	24° 32' 16"	428.791	217.47	N 24° 26' 40" E	200.00'
36	24° 32' 16"	428.791	217.47	N 24° 26' 40" E	200.00'
37	24° 32' 16"	428.791	217.47	N 24° 26' 40" E	200.00'
38	24° 32' 16"	428.791	217.47	N 24° 26' 40" E	200.00'
39	24° 32' 16"	428.791	217.47	N 24° 26' 40" E	200.00'
40	24° 32' 16"	428.791	217.47	N 24° 26' 40" E	200.00'
41	24° 32' 16"	428.791	217.47	N 24° 26' 40" E	200.00'
42	24° 32' 16"	428.791	217.47	N 24° 26' 40" E	200.00'
43	24° 32' 16"	428.791	217.47	N 24° 26' 40" E	200.00'
44	24° 32' 16"	428.791	217.47	N 24° 26' 40" E	200.00'
45	24° 32' 16"	428.791	217.47	N 24° 26' 40" E	200.00'
46	24° 32' 16"	428.791	217.47	N 24° 26' 40" E	200.00'
47	24° 32' 16"	428.791	217.47	N 24° 26' 40" E	200.00'
48	24° 32' 16"	428.791	217.47	N 24° 26' 40" E	200.00'
49	24° 32' 16"	428.791	217.47	N 24° 26' 40" E	200.00'
50	24° 32' 16"	428.791	217.47	N 24° 26' 40" E	200.00'
51	24° 32' 16"	428.791	217.47	N 24° 26' 40" E	200.00'

57

000100

BENCH MARK
Land surveying and mapping, inc.

27, 28, & 34 / 41 / 41

CONRAD W. HAEFER CONSULTING ENGINEERS, INC. PALM BEACH, FLORIDA	
SECTION NO.	91
(CONTAINING 57 ACRES)	
DATE	APR. 1977
SCALE	1" = 200'
FILE NO.	77-042
SHEET NO.	2
TOTAL SHEETS	3

NOTE: 1. ALL RETURN RADII, WHEN INDICATED, ALONG EASEMENT LINE INTERSECTIONS FOR RECREATION, UTILITY AND DRAINAGE EASEMENTS, (R,U&D EASE.), ARE 50' UNLESS OTHERWISE NOTED.
ALL RETURN RADII ALONG EASEMENT LINE INTERSECTIONS FOR INGRESS AND EGRESS EASEMENTS ARE 50' UNLESS OTHERWISE NOTED.
THIS INSTRUMENT WAS PREPARED BY ROBERT W. HODGE IN THE OFFICE OF BENCH MARK LAND SURVEYING AND MAPPING, INC., 2300 S.W. 8th St., Palm Beach, Florida, PHONE 689-2111.

CALOOSA